

Adding Two Integers with the Same Sign



Adding Integers



Vocabulary A-Z

Let us learn some vocabulary

Opposites

Two numbers with the same absolute value but different signs are called opposites.

-4 and **4** are OPPOSITES

Additive inverse

An integer and its opposite are also called additive inverses.

Number	-5	+	5	=	0
	14		-14		

Additive inverse



Key Concept

Adding Integers with the Same Sign

Words: To add integers with the same sign, add their absolute value.

The sum is:

- Positive if both integers are positive.
- Negative if both integers are negative.

Examples: $-5 + (-2) = -7$ $6 + 3 = 9$

Adding Integers with different Signs

Words: To add integers with different signs, subtract their absolute values.

The sum is:

- Positive if the positive integer's absolute value is greater.
- Negative if the negative integer's absolute value is greater.

Additive Inverse Property

Words: The sum of any number and its additive inverse is zero.

Symbols: $x + (-x) = 0$

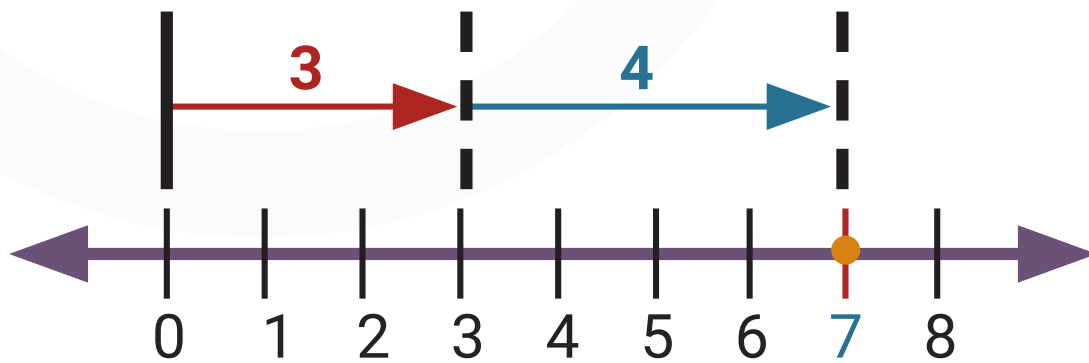
Examples: $6 + (-6) = 0$



Let's Begin

Add Integers on a Number Line

Find $3 + 4$.



Start at zero.

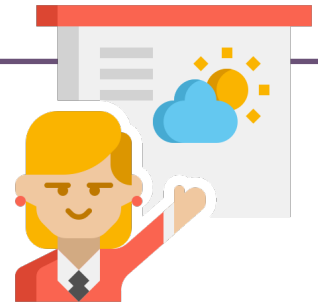
Move three units to the right.

From there, move four more units to the right.

ANSWER

$$3 + 4 = 7$$

REAL WORLD EXAMPLE



WEATHER

On February 1, the temperature at dawn was -22°F . By noon, it had risen 19 degrees. What was the temperature at noon?

Words








The temperature at dawn was -22°F . It had risen 19 degrees by noon. What was the temperature at noon?

Variable

Let x = the temperature at noon.



Equation

Temperature at dawn	plus	increase by noon	equals	Temperature at noon
				
-22	$+$	19	$=$	x

Solve the Equation.

$-22 + 19 = x$ To find the sum, subtract $|19|$ from $|-22|$.

$-3 = x$ The sum is negative because $|-22| > |19|$.

ANSWER

The temperature at noon was -3°F .

Add Integers with the Same Sign

Find $-5 + (-4)$.

$-5 + (-4) = -9$ Add $|-5|$ and $|-4|$. Both numbers are negative, so the sum is negative.

ANSWER

-9



Your Turn!

Add Integers on a Number Line

Find $-2 + 5$

- A. 7
- B. -7
- C. 3
- D. -3

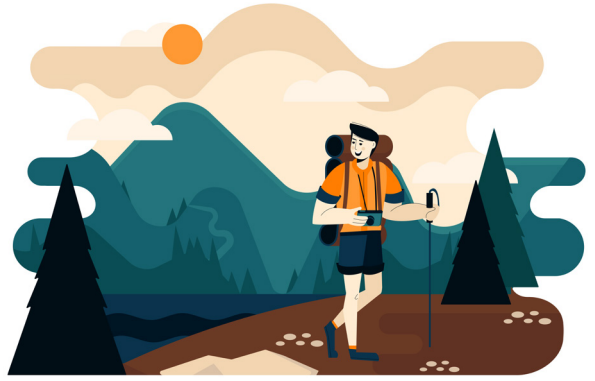
Add Integers with the Same Sign

Find $-3 + -8$

- A. 5
- B. -5
- C. 11
- D. -11

HIKING

Dave started his hike at 32 feet below sea level. During the hike he gained an altitude of 29 feet. At what altitude did Dave complete his hike?



- A. 3 feet above sea level
- B. 3 feet below sea level
- C. 61 feet above sea level
- D. 61 feet below sea level